

UGA - Euphonium Audition Materials – Fall 2026

Sunday August 16 @ 2:00 in HHSOM 308

Required Excerpts:

1. *Lincolnshire Posy*, Percy Aldridge Grainger
 - Movement 1, Dublin Bay - euphonium
 - Movement 2, Harkstow Grange – baritone (Bb treble clef)
 - Movement 3, Rufford Park Poachers – euphonium
 - Movement 4, The Brisk Young Sailor – baritone (Bb treble clef)
2. *Molly on the Shore*, Percy Aldridge Grainger
3. *Hands Across the Sea*, John Philip Sousa
4. Possible Sight Reading

Prepare the entire list above, I will select excerpts from these for the audition. The bulk of these excerpts come from works by Percy Grainger. In order to accurately present the style and musicianship of these pieces especially, you *must* listen to the music to guide your practice and interpretation.

Suggestions:

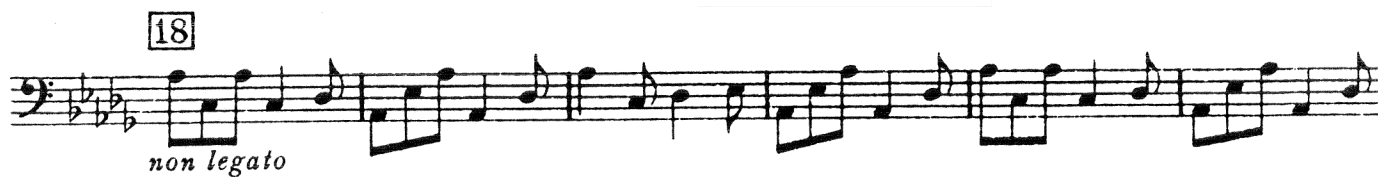
- Listen actively – read the part/score as you listen, also play along. You can easily find the complete parts to each of these pieces online
- Tempos – these are intentionally left off the provided excerpts – listen and choose appropriate performance tempos for each piece.
- Make sure you fully prepare each excerpt, especially the portions that are obviously difficult, tricky, or important. These are all standard professional excerpts that you could expect to find in any professional band audition packet.
- Create a feedback loop – practice, record, listen, analyze and repeat

A successful audition will present:

- Excellent time, rhythm, technique and intonation
- A beautiful, characteristic sound
- Clear musical intent in every moment of every piece
- a confident and well-rehearsed audition process – visualize your audition beforehand and know what you are doing before you walk in.

Good Luck!

Lincolnshire Posy by Percy Aldridge Grainger
Mvt. 1 - Dublin Bay (Sailor's Song) euphonium part



Lincolnshire Posy by Percy Aldridge Grainger
Mvt. 2 - Harkstow Grange - baritone part

Slowly flowing

mf cantabile

6 10 Tromb. I

f *mf* *p*

14 *p* *f* *dim.* 3

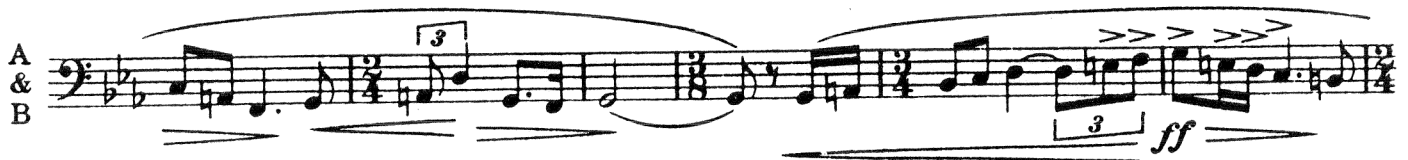
17 *p* *> ppp*

Lincolnshire Posy by Percy Aldridge Grainger
Mvt. 3 - Rufford Park Poachers - euphonium part

51 (2nd speed)
Faster
f

Musical notation for measure 51, marked 'Faster' and 'f'. The notation is on a single staff with a treble clef and a 2/4 time signature. It consists of a quarter note G4, a quarter note A4, a quarter note B4, and a quarter note C5.

A & B

Musical notation for measures 52-55, marked 'ff'. The notation is on a single staff with a bass clef and a 2/4 time signature. It consists of a quarter note G3, a quarter note A3, a quarter note B3, and a quarter note C4. There are various ornaments and dynamics throughout the passage.Musical notation for measures 56-59. The notation is on a single staff with a bass clef and a 2/4 time signature. It consists of a quarter note G3, a quarter note A3, a quarter note B3, and a quarter note C4. There are various ornaments and dynamics throughout the passage.

63
mf

Musical notation for measure 63, marked 'mf'. The notation is on a single staff with a bass clef and a 2/4 time signature. It consists of a quarter note G3, a quarter note A3, and a quarter note B3.

Lincolnshire Posy by Percy Aldridge Grainger
Mvt. 4 - The Brisk Young Sailor - baritone part

17

Solo



25

6



34

Bass Clar.

mp

p

mf non legato



Molly on the Shore by Percy Aldridge Grainger

75 Solo
mp

83
f *mf cresc.*

91 Solo
ff molto espr. *ad lib.*

99 Alto Cl. or 1st J
ppp 1
ppp

Detailed description: The image shows a page of musical notation for the piece 'Molly on the Shore' by Percy Aldridge Grainger. It consists of five staves of music, all in bass clef. The first staff begins at measure 75, marked 'Solo' and 'mp'. It features a melodic line with triplets and slurs. The second staff continues the melody, marked 'f'. The third staff starts at measure 83, marked 'f' and 'mf cresc.', showing a dynamic increase. The fourth staff begins at measure 91, marked 'Solo', 'ff molto espr.', and 'ad lib.', featuring a more complex melodic line with slurs and accents. The fifth staff, starting at measure 99, is for 'Alto Cl. or 1st J' and is marked 'ppp'.

Hands Across the Sea, John Philip Sousa
Beginning to end of trio, take 2nd endings

The image displays a musical score for the piece "Hands Across the Sea" by John Philip Sousa. The score is written in bass clef with a key signature of one flat (B-flat) and a common time signature (C). It consists of several staves of music. The first staff begins with a dynamic marking of *ff* (fortissimo) and features a melodic line with various ornaments and slurs. The second staff continues the melodic development, also marked *ff*. The third staff includes a first ending bracket and a second ending bracket, both marked *ff*. The fourth staff continues the melodic line, marked *ff*. The fifth staff is labeled "Trio." and begins with a dynamic marking of *p* (piano). The sixth staff continues the trio section, marked *p*. The seventh staff shows the end of the trio with a first ending bracket and a second ending bracket, both marked *p*. The score includes various musical notations such as slurs, ornaments, and dynamic markings.